

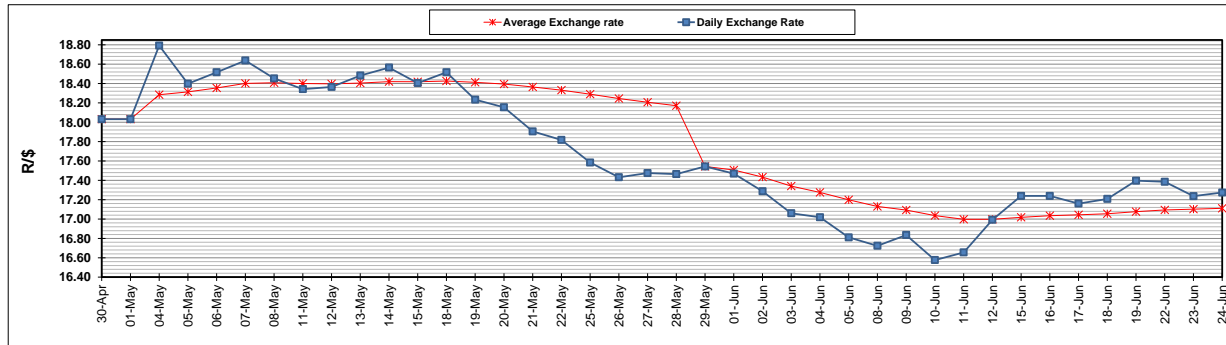
	PETROL 95 ULP	PETROL 93 ULP & LRP	DIESEL 0.05%	DIESEL 0.005%	ILL. PAR.
GAUTENG PUMP PRICE (SA c/l) AS FROM 03/06/2020	1,340.000	1,320.000	-	-	-
WHOLESALE PRICE (SA c/l) AS FROM 03/06/2020	-	-	1,130.560	1,138.960	489.828
SINGLE NATIONAL MAXIMUM RETAIL PRICE	-	-	-	-	597.000
BASIC FUEL PRICE - 24/06/2020 (SA c/l)	587.294	574.790	584.399	587.376	524.334
PRESS RELEASE CONTRIBUTION TO BFP 03/06/2020 - 24/06/2020 (SA c/l)	392.770	382.770	379.630	388.030	285.128
UNIT OVER/(UNDER) RECOVERY - 24/06/2020 (SA c/l)	(194.524)	(192.020)	(204.769)	(199.346)	(239.206)
AVERAGE BASIC FUEL PRICE 29/05/2020 - 24/06/2020	547.025	527.616	548.562	552.386	492.757
AVERAGE UNIT OVER/(UNDER) RECOVERY 29/05/2020 - 24/06/2020	(172.887)	(163.478)	(172.405)	(167.672)	(213.945)

ANALYSIS MOVEMENT OF AVERAGE OVER/(UNDER) RECOVERY

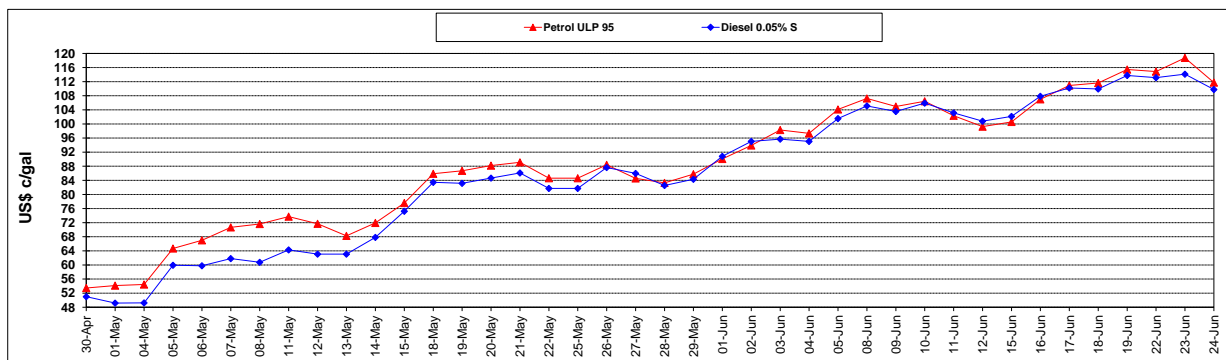
	PETROL 95	PETROL 93	DIESEL 0.05%	DIESEL 0.005%	ILL. PAR.
- MOVEMENT IN INTERNATIONAL PRODUCT PRICES	(206.794)	(196.182)	(206.408)	(201.911)	(244.488)
- MOVEMENT IN EXCHANGE RATE	33.907	32.704	34.002	34.239	30.543
AVERAGE UNIT OVER/(UNDER) RECOVERY 29/05/2020 - 24/06/2020	(172.887)	(163.478)	(172.405)	(167.672)	(213.945)

R/\$ EXCHANGE RATE - (R/\$17.2735 - 24/06/2020)

EXCHANGE RATE USED IN BASIC FUEL PRICE



INTERNATIONAL PRODUCT PRICES OF BASKET USED IN BASIC FUEL PRICE



BASIC FUEL PRICE IN SA CENTS PER LITRE

